

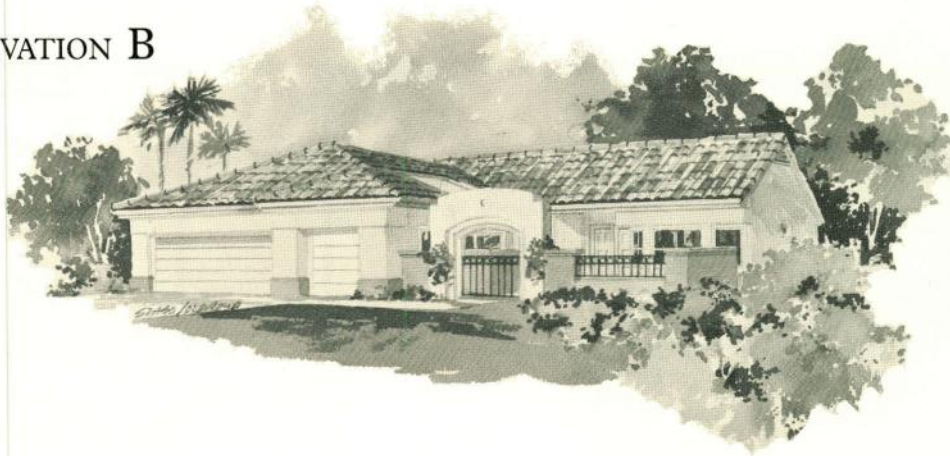
THE SOLITAIRE 5105 L

- 2 Bedrooms • 2 Bathrooms • Den • Living Area • Dining Area • Foyer
- Kitchen • Breakfast Nook • Family Room • 2-Car Garage with Cart Storage
- Covered Patio • Utility Room • Approximately 2,137 liveable sq. ft.

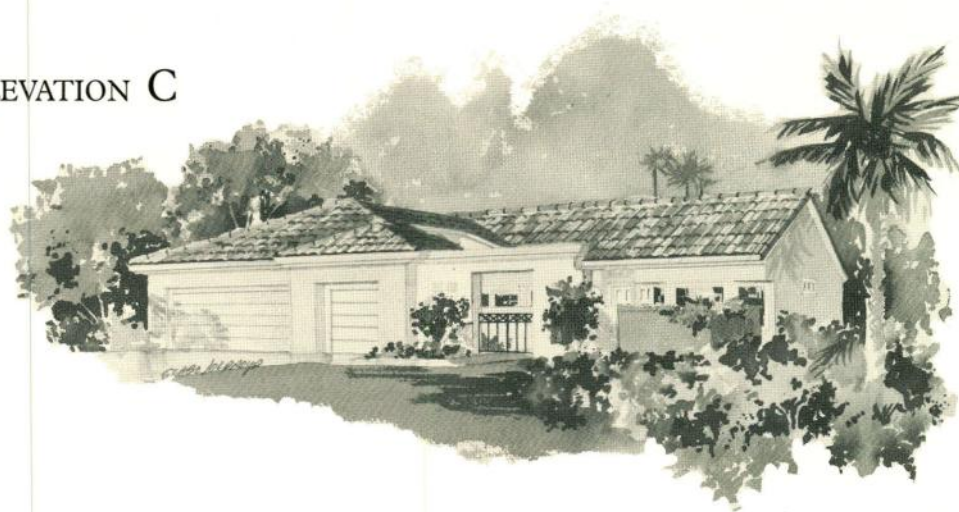
ELEVATION A



ELEVATION B



ELEVATION C



Due to normal construction tolerances, room sizes may vary slightly from those shown on floorplans. Illustrations are artists' conceptions and are not intended to show specific detailing. This applies to all illustrated floorplans and elevations. Model representations and options subject to change without notice.