

THE WATERFORD 5101

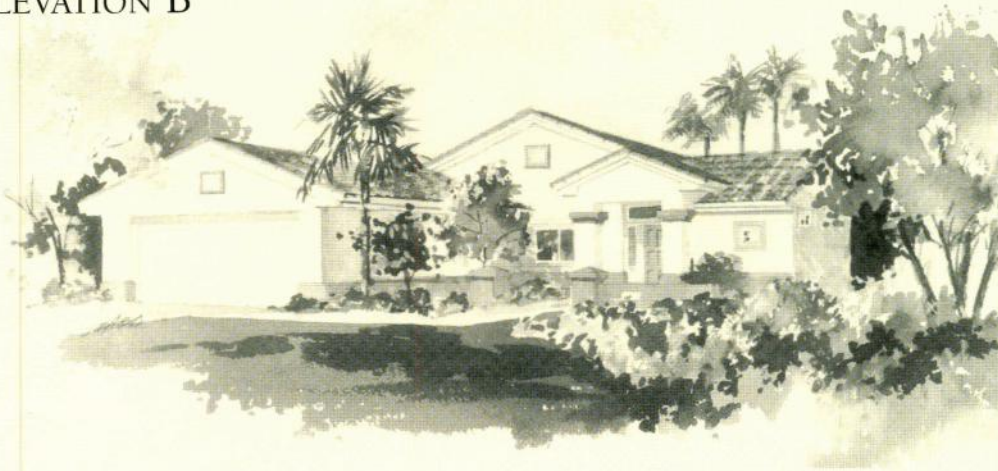
- 2 Bedrooms • 2 Bathrooms • Living Area
- Dining Area • Foyer • Kitchen • Breakfast Nook
- Utility Room • 2 Car Garage • Covered Patio
- Approximately 1,319 liveable sq. ft.

Liveable s.f.	1,319
Garage	561
Covered Patio & Entry	180
Total Under Roof	2,060

ELEVATION A



ELEVATION B



ELEVATION C



Due to normal construction tolerances, room sizes may vary slightly from those shown on floor plans. Illustrations are artists' conceptions and are not intended to show specific detailing. This applies to all illustrated floor plans and elevations. Model representations and options subject to change without notice.